

Portsmouth Marina Members.

We will be opening on May 15!

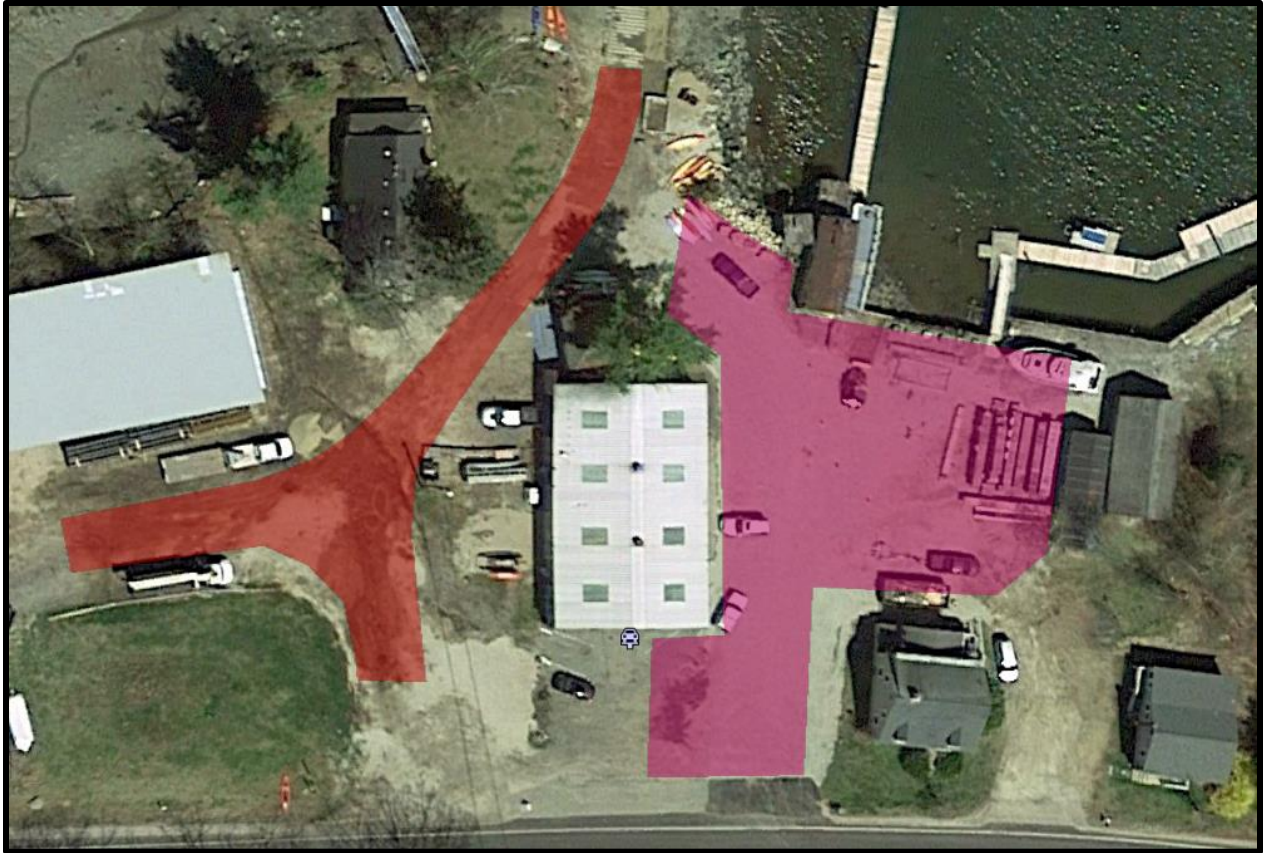
This year more than ever, boating is a great way to relax and safely enjoy the water. Fuel prices will remain very reasonable for the season as well, so it will be an excellent time to get out.

Our entire team has been closely watching the progression of Covid 19. The virus will be with us for the foreseeable future and certainly the entirety of this boating season. As most people are well aware, there are specific individuals that are highly susceptible to the worst symptoms of the virus. This would include nearly a third of the membership at the marina based on age alone. In order to provide access to the docks and keep the members safe we will adopt a series of guidelines to follow for the entire season. These guidelines are likely to change as better information becomes available, testing more prevalent, vaccine is available, etc. The guidelines are intended to keep the members safe and provide vital tracing information if an infection has been identified at the marina. We are working hard to be part of the solution. These guidelines will be enforced and must be followed for the protection of everyone.

This season will be different and we will provide access to your boat, however, the marina will not be a congregation or socializing location. Members are expected to park, go to their vessels, perform your pre-trip inspection, and head out on the water. There will be no loitering on your boats or dock while at the marina. You are encourage to take the time you need to be safe, but not loiter.

- Maintain social distancing at all times.
- Members will be issued stickers for their vehicle, only vehicles with stickers will be permitted in the designated member parking area (pink on image below).
- Family vehicle ride sharing is encourage to limit each member to one vehicle at the marina. This will allow room for vehicles, and adequate spacing in the member area.
- The member area will have a narrow opening along the street to limit access the parking lot. Please be courteous and let incoming traffic enter first to reduce any congestion on the Wentworth Road. Signs will indicate the entrance.
- The drive through area by the launch ramp will be blocked for the season.
- The launch ramp will be accessed on the west side entrance and signs will designate the guest parking areas and launch ramp entrance. (brown area on the image below)

- Maintain 6' between vehicles when parking and 6' minimum between people at all times.
- No more than 6 people will be permitted in any group, and only immediate quarantined family members should be on the same boat.
- Face coverings will be worn while in the marina, they can be removed when on the water.
- Bring your own PPE and sanitizer.
- Loitering anywhere at the marina is prohibited for the season. There will be no activities at the Cove.
- There will be no fishing from the dock. This includes fishing lines, lobstering, cast nets, etc. Anyone bringing lobster gear to the facility will need to schedule a time and only load lobster traps from the launch ramp dock.
- For those members launching vessels at the marina. Launches will be made in the order of arrival. Do not leave your vehicle until it is your time to launch. Make as many preparations to the vessel ahead of time to speed the launch process when it is your time.
- Port A Potties will be available and segregated for men and women. The Port A Potties will be locked and one key will be provided for each of the members. A wash station will be positioned near the rest rooms for hand washing. The wash station will be available in early June.



Area in Pink is parking for slip members, area in brown indicates boat launch access. The area nearest the Port A Potties should be left for slip members on A dock.

Please enjoy your season and thank you in advance for your cooperation.